

BUSINESS POWERUP

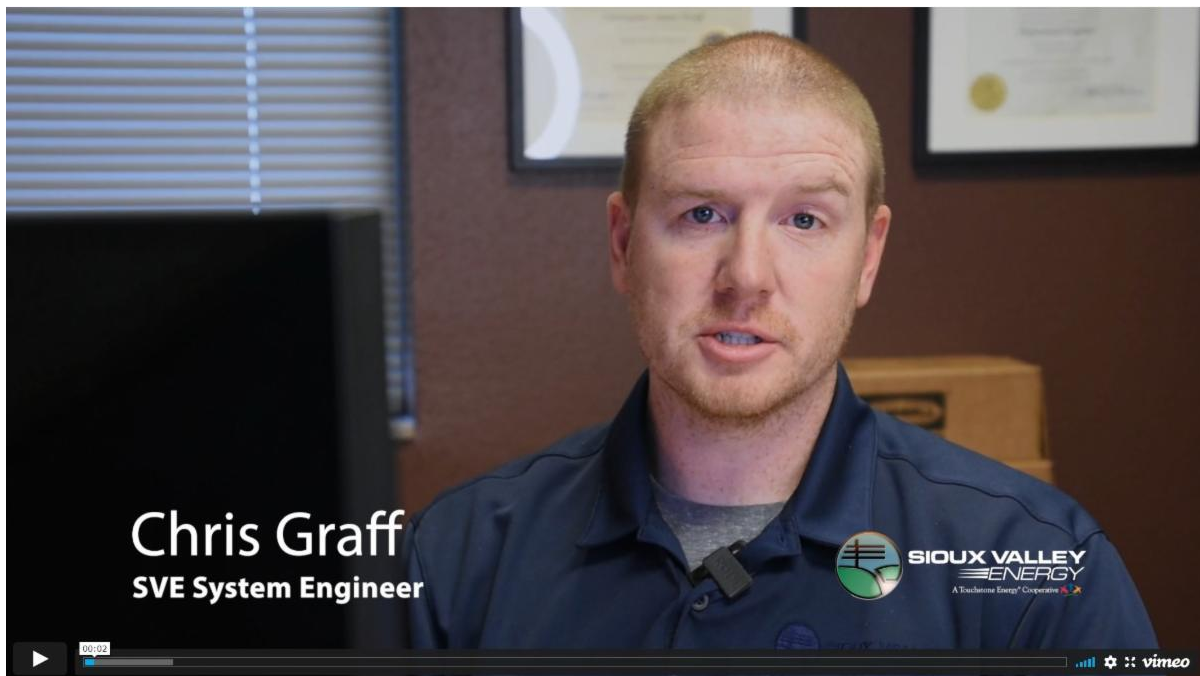


Getting Smart About Energy

Sioux Valley Energy has a desktop and mobile app - SmartHub - that can help your operation monitor energy use and better understand your energy bill. This month, we offer a video tutorial of navigating SmartHub for your business. And, in the latest episode of our [Inside the Grid](#) podcast, we talk with Sioux Valley Energy's System Engineer Chris Graff and SVE Billing Supervisor Molly Burmeister about some of SmartHub's features.

If you have suggestions for future issues or wish to discuss your operation's current and future energy needs, please contact me at jay.buchholz@siouxvalleyenergy.com or call my cell phone at 605-940-2053.

You can find previous issues of *Business PowerUP* [here](#).



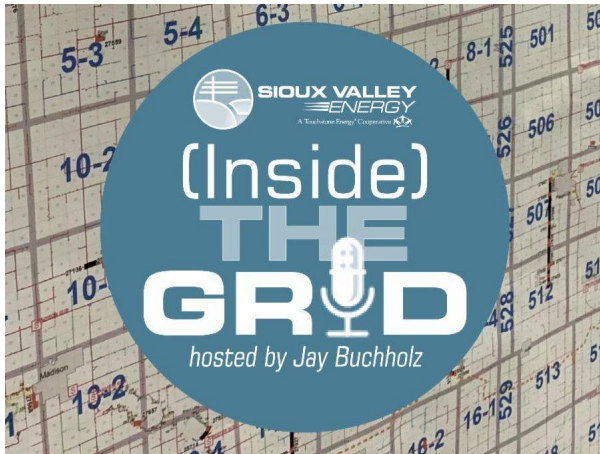
Smart Hub and Your Operation

Why set up a SmartHub account for your business? Watch this video as Sioux Valley Energy System Engineer Chris Graff walks you through SmartHub navigation for this invaluable resource.

If you need additional help, call Chris, Jay or one of our Member Service Representatives at 1-800-234-1960.



Inside The Grid Podcast



In this month's episode of [Inside The Grid](#) podcast, I talk with Sioux Valley Energy's Chris Graff and Molly Burmeister about the Smart Hub platform and how it can help your business monitor your energy use and understand your bill.

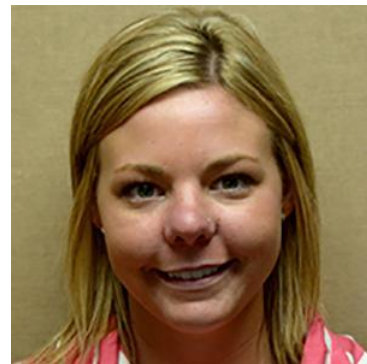
ITG: Smart Hub



Jay Buchholz, CKAE
Key Account and Community
Relations Executive



Chris Graff
Sioux Valley Energy
System Engineer



Molly Burmeister
Sioux Valley Energy
Billing Supervisor



Visit our Website

Jay Buchholz, CKAE | Key Account and Community Relations Executive
C: 605-940-2053 | Jay.Buchholz@siouxvalleyenergy.com
Sioux Valley Energy | 1-800-234-1960 | www.sioxvalleyenergy.com

Sioux Valley Energy is an equal opportunity provider and employer.

Follow us on **Vimeo** or one of these social media channels:



Sioux Valley Energy | PO Box 216, 47092 SD Hwy 34, Colman, SD 57017

[Unsubscribe](#) {recipient's email}.

[Update Profile](#) | [Constant Contact Data Notice](#)

Sent by jay.buchholz@siouxvalleyenergy.com powered by



Try email marketing for free today!